

STAINLESS STEEL CAMLOCK AND GROVED COUPLINGS SERIES

不锈钢快装接头系列

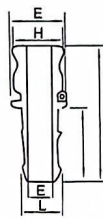
◆ 特点:

连接形式: 螺纹、法兰、焊接、卡套、快接
 材质为: SUS304、SUS316制成
 管道流量控制: DN15~150及1/2"~6"
 适用于各种条件及连接需要

◆ Feature

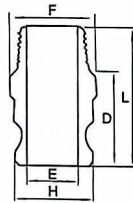
Type:Screwed、flanged、welding、
 adjus table joint、quick coupling
 Material quality:SUS304、SUS316
 Flux domination of pipeline:
 DN15~150及1/2"~6"
 Applicable to various conditions and connected to

TYPE:E ADAPTOR HSAE SHANK



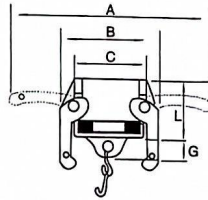
SIZE	Inch	1/2	3/4	1	1 1/4	1 1/2	2	2 1/2	3	4	6
E	mm	15	20	25	32	40	50	65	80	100	150
H		8.0	13.8	19.8	25.9	32.3	44.5	56.7	68	93.4	142
I		14.6	21.0	27.0	33.7	40.1	52.7	66.3	79	104.4	157
J		30.2	35.0	38.0	48.0	55.4	65.3	79.5	93.5	121.5	187
K		41.3	51	60	57	60	70	80	100	108	146
L		86.5	86.3	105.8	109.5	113	138.5	149.5	166.6	174.5	224

TYPE:F ADAPTOR MALE



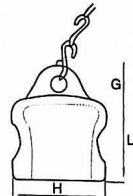
SIZE	Inch	1/2	3/4	1	1 1/4	1 1/2	2	2 1/2	3	4	6
D	mm	15	20	25	32	40	50	65	80	100	150
E		34.1	39.0	48.5	52.5	54	61.7	68	70	74.5	83
F		14.3	21.3	23.8	30.8	38.5	46.7	58	73.2	98.2	149
H		29.3	39.2	43.8	51.9	60.4	74.7	82.3	97.8	126.8	196
L		24.3	32	36.5	45.5	53.4	63	75.9	91.5	119.5	175.9
		48.8	58	67.5	73.2	74.7	87.1	79	101	107.9	127

TYPE:DC DUST CAP



SIZE	Inch	1/2	3/4	1	1 1/4	1 1/2	2	2 1/2	3	4	6
A	mm	15	20	25	32	40	50	65	80	100	150
B		68.4	116	125	181	189	199	210	254	282	409
C		39.9	53.3	60.9	82.6	90.3	99.8	112.4	137.6	165.6	255
G		34.9	41	47	58	65	75	90	108	140	198
L		9.5	10	12	11	12	12	14	15	12	16
		32.5	34.0	41.0	46.5	53.2	53.2	57.8	59.5	60.0	68

TYPE:DP DUDST PLUG



SIZE	Inch	1/2	3/4	1	1 1/4	1 1/2	2	2 1/2	3	4	6
G	mm	15	20	25	32	40	50	65	80	100	150
H		9.5	12	13	14	16	19	11	11	13	16
L		24.3	32	36.5	45.5	53.4	63	75.9	91.5	119.5	175.9
		26	27.5	36.5	42	44.0	50.8	53	55.0	52.6	60

STAINLESS STEEL CAMLOCK AND GROVED COUPLINGS SERIES

不锈钢快装接头系列

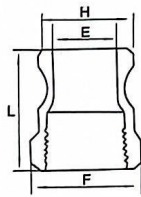
◆ 特点:

连接形式: 螺纹、法兰、焊接、卡套、快接
 材质为: SUS304、SUS316制成
 管道流量控制: DN15~150及1/2"~6"
 适用于各种条件及连接需要

◆ Feature

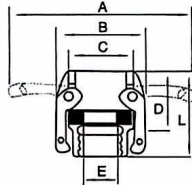
Type:Screwed、flanged、welding、
 adjus table joint、quick coupling
 Material quality:SUS304、SUS316
 Flux domination of pipeline:
 DN15~150及1/2"~6"
 Applicable to various conditions and connected to

TYPE:A ADAPTOR FEMALE



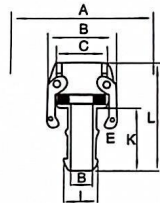
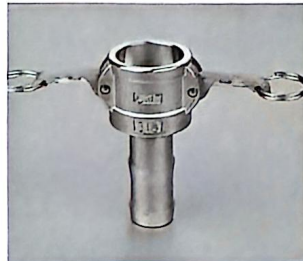
SIZE	Inch	1/2	3/4	1	1 1/4	2	2 1/2	3	4	6
	mm	15	20	25	32	50	65	80	100	150
E		14.3	21	23.8	30.8	46	58	73.2	98.2	149
F		29.3	39.2	43.8	51.9	74.7	82.3	97.8	126.8	191
H		24.3	32	36.6	45.5	63	75.9	91.5	119.5	175.9
L		41.3	39	48.5	52.5	61.7	68	70	74.6	86

TYPE:B COUPLER MALE



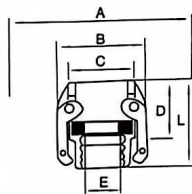
SIZE	Inch	1/2	3/4	1	1 1/4	1-1/2	2	2-1/2	3	4	6
	mm	15	20	25	32	40	50	65	80	100	150
A		68.4	116	125	181	189	199	210	254	282	409
B		39.9	53.3	60.9	82.6	90.3	99.8	112.4	137.6	166.6	255
C		34.9	41	47	58	65	75	90	108	140	198
D		32.5	32	39	44.5	45.0	50.0	54.3	55.5	55.5	73
E		14.3	19.0	25.0	36.6	39.0	50.8	63.0	76.2	100.8	146
L		49.2	51	58	67.2	65.7	75.4	83.3	86.5	88.8	116

TYPE:C COUPLER FEMALE



SIZE	Inch	1/2	3/4	1	1 1/4	1-1/2	2	2-1/2	3	4	6
	mm	15	20	25	32	40	50	65	80	100	150
A		68.4	116	125	181	189	199	210	254	282	409
B		39.9	53.3	60.9	82.6	90.3	99.8	112.4	137.6	166.6	255
C		34.9	41	47	58	65	75	91	108	140	198
E		8.0	13.8	19.8	25.9	32.3	44.5	56.7	68	93.4	142
I		14.6	21.0	27.0	33.7	40.1	52.7	66.3	79	104.4	157
K		41.3	51	57	59	61	70	79	102	108	146
L		84.9	82.8	95.2	102.5	104.0	129	142.3	157.1	163.5	214

TYPE:D 尺寸 COUPLER FEMALE



SIZE	Inch	1/2	3/4	1	1 1/4	1 1/2	2	2 1/2	3	4	6
	mm	15	20	25	32	40	50	65	80	100	150
A		68.4	116	125	181	189	199	210	254	282	409
B		39.9	53.3	60.9	82.6	90.3	99.8	112.4	137.6	166.6	255
C		34.9	41	47	58	65	75	91	108	140	198
D		32.5	32	39	44.5	45.0	50.0	54.3	55.5	55.5	74
E		14.3	21	25.0	34.9	39.0	50.8	63.0	76.2	100.8	146
L		49.2	51	61.0	67.5	67	72.2	83.3	86.5	88.8	114